



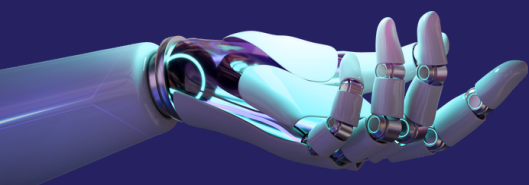
# SYMPATIC

## WHITE PAPER

Sympatic for Startup Accelerator, Innovation, and Entrepreneurship Programs



## Tl;dr:



Those who run innovation and entrepreneur programs know that technology startups, particularly AI startups, need access to data to develop and test their products and services. However, sharing data can be complex, with inherent risks such as data breaches, privacy concerns and geopolitical issues.

As the world becomes increasingly data-driven, effective and ethical data sharing has become more critical than ever. To stay competitive, many organizations recognize the value of data sharing, whether with other organizations or within their own teams. However, there are inherent risks and complexities in sharing sensitive data.

This is where Sympatic comes in. Our zero-copy technology and ethical data-sharing framework enable secure, efficient, and ethical sharing of data without the need for data transfer, which helps accelerate the use of data for innovation and discovery.



# Transformative benefits

We believe that the benefits of our approach are far-reaching, especially for innovation and entrepreneur accelerator programs. We see six key benefits that we believe would be of particular interest to Accelerator programs and Incubators fostering innovative technology companies built around data or access to data.

- 1. Ethical data sharing:** Sympatic's zero-copy technology provides an ethical and secure solution for sharing sensitive data, which ensures that all stakeholders' interests are protected. This ethical approach is particularly important in today's world, where data privacy is becoming an increasingly important issue.
- 2. Reduced administrative burden:** With Sympatic, the administrative burden of data sharing is significantly reduced. This means that data can be accessed faster, allowing startups and researchers to move more quickly, which is particularly important in the fast-paced world of innovation.
- 3. Increased innovation:** By providing a secure and ethical way to share data, Sympatic can help increase innovation by enabling startups and researchers to access the data they need to create new products and services. This can help drive economic growth and create new jobs.
- 4. Controlled data access:** Sympatic's technology allows for controlled data access, which means that data can be shared without the risk of it being misused or mishandled. This can help build trust between organizations and encourage more data sharing in the future.
- 5. Avoiding geopolitical risks:** By enabling data to be kept within a country's borders, Sympatic can help avoid geopolitical risks associated with sharing data with other countries. This can help to protect national security and avoid potential conflicts.
- 6. Cost-effective:** Sympatic's zero-copy technology is a cost-effective way to share data, which can be particularly important for startups and smaller organizations. By reducing administrative burdens and the need for data transfer, Sympatic can help organizations save time and money, while still providing the data they need to drive innovation.

# Innovation requires data

Any startup that is focused on data-driven innovation may require access to sensitive data to develop and test its products and services. This applies across a range of industries:

- Healthtech startups:** Healthtech startups may require access to large amounts of medical data, such as patient records, to develop and improve their products and services.
- Fintech startups:** Fintech startups may require access to financial data, such as transaction histories and credit scores, to build innovative financial products.
- Agtech startups:** Agtech startups may require access to agricultural data, such as weather patterns and crop yields, to develop solutions that increase crop productivity and sustainability.
- Energytech startups:** Energytech startups may require access to energy usage and infrastructure data to develop solutions that improve energy efficiency and reduce carbon emissions.
- Transporttech startups:** Transporttech startups may require access to traffic and transportation data to develop solutions that improve mobility and reduce congestion.
- Govtech startups:** Govtech startups may require data on criminal activity from law enforcement agencies to citizen services or public safety, or data on demographics, housing, and transportation to develop solutions such as traffic optimization, parking management, and smart city planning.





# More data, better AI

Data is the feedstock for training AI models that are transforming every industry. Access to data is a critical blocker separating data owners and AI innovators. Small public data sets typically available for training and development purposes put innovators at a competitive disadvantage. The GPT (Generative Pre-trained Transformer) language model developed by OpenAI has been trained on various amounts of data in different versions. The earlier versions, such as GPT-1 and GPT-2, were trained on smaller amounts of data, around 1.5GB and 40GB, respectively. The latest version, GPT-3, is currently the largest language model and was trained on a massive amount of data, around 570GB. The sheer amount of data used to train GPT-3 is one of the factors that makes it so powerful, along with other innovations such as its architecture and training methodology.

This is informative. Small pools of data simply do not prove the power of AI or result in particularly useful products. Data at scale can result in products so powerful that they take the world by storm. Witness ChatGPT using GPT-3 which gained users at the fastest pace ever recorded in technology and resulted in massive investment and a lucrative partnership with Microsoft.



# Why work with Sympatic?



Accelerator programs should consider engaging with Sympatic because of the benefits that Sympatic's zero-copy technology and ethical data-sharing framework can provide. Sympatic's solution can enable startups to access sensitive data in a secure and ethical manner, which is especially important for startups that require large pools of data to develop their products and services. Sympatic's technology can also provide startups with faster access to data while ensuring that the data remains under the control of the data owner, which can help to reduce the risks associated with traditional data transfer methods.

By working with Sympatic, accelerator programs can also demonstrate their commitment to responsible data sharing, which is an increasingly important consideration for investors, partners, and stakeholders. Sympatic's ethical data-sharing framework ensures that data is shared in a responsible manner, which can help to build trust and credibility with investors and stakeholders. Additionally, Sympatic's technology can provide accelerator programs with a competitive advantage by enabling their startups to access data more quickly and securely than their competitors.



## About the authors

---

Dr. Piers Nash is the Founder and CEO of Sympatic. Dr. Nash is a former University of Chicago professor of Cancer Research, a Director for the development of the NCI Genomic Data Commons, IBM Global Consultant for Genomics and Health Data with Watson and Cloud, and Managing Director for the American Medical Association startup innovation lab. Dr. Nash has taken his startups through various accelerators and entrepreneurship programs. These include the Global New Venture Challenge, Y Combinator Startup School (winner); Techstars Boulder Accelerator 2020; Creative Destruction Lab Rockies Prime 2021, and Alberta Innovates sponsored AlchemistX Telus Community Safety and Wellness Accelerator in 2022.

## Trademarks and Patents

VirtualVault® is a registered trademark of Sympatic Inc. Sympatic VirtualVault technology is protected by US patents US-11550945-B2, US-11556667-B2, and patents-pending.